

# Day Tank

Model DT

# 165

Preferred day tanks provide a local supply of distillate or diesel fuel for boilers, emergency generators or other stationary engine driven or oil fired equipment. Available from 20 to 620 gallon capacities, a properly sized tank may be selected per individual job. For maximum fuel capacity in a minimum space, Preferred day tanks are rectangular in shape. Each day tank unit includes all necessary pipe connections, inspection port, manual fill port, and tank gauge, along with a variety of optional accessories.

- Complete tank, rupture basin and instrumentation package
- Rectangular day tank and rupture basin assemblies of 290 gallons or less are doorway accessible
- Built to U.L. 142 or 2085 standards
- With its high strength & heavy duty construction, series DT day tanks cut manufacturing time and cost while maintaining Preferred's quality and customer service

## Standard Equipment

- "UL" Day Tank Assembly
- "UL" Rupture Basin Assembly
- Level Gauge (top mounted & float operated)
- Three Drop Tubes (external device supply/return and day tank fill)
- Containment – 160% of Day Tank Capacity
- Plugged Drain Tapping
- Exterior Chemical Resistant Finish (gray enamel over rust-resistant primer)
- Structural Steel Channel Mounting Base

## Optional Equipment

- PLS-2, PLS-4, or PLS-5 level switch assembly
- Model RBS leak detector
- Return pump(s)
- Supply pump(s)
- FSC-based control enclosure

## Tank Specifications

Mounting Base: Structural steel channel

Metal Thickness: 10 gauge

Exterior Finish: Chemical resistant gray enamel over rust resistant primer

Manual Fill Port: 2" NPT

Inspection Port: 6" square gasketed plate  
1" NPT Pipe

Connections: Tank fill, engine fuel return, overflow to storage tank, engine fuel supply, plugged drain

Vent Connections: Top mounted  
2" -- 20-60 gallon  
3" -- 80-190 gallons  
4" -- 220 gallons and over

Approvals/ Compliance: UL approved, NFPA 30 compliant

## Rupture Basin Specifications

Mounting Base: Structural steel channel

Containment: 160% of tank capacity standard (other capacities available, consult factory)

Leak Detector: Preferred RBS float switch

Metal Thickness: Same as companion tank

Turned Edge: Chemical resistant gray enamel Reinforcement finish over rust resistant primer

Finish:

Drain: Plugged 1" NPT coupling Approvals/

Compliance: UL approved

*Specifications subject to change without notice.*



*Day Tank, Rupture Basin, Level Controller and Gauge, Inspection Port and Connections shown*

*Specs found here*



# Day Tank

Specifications

# 166

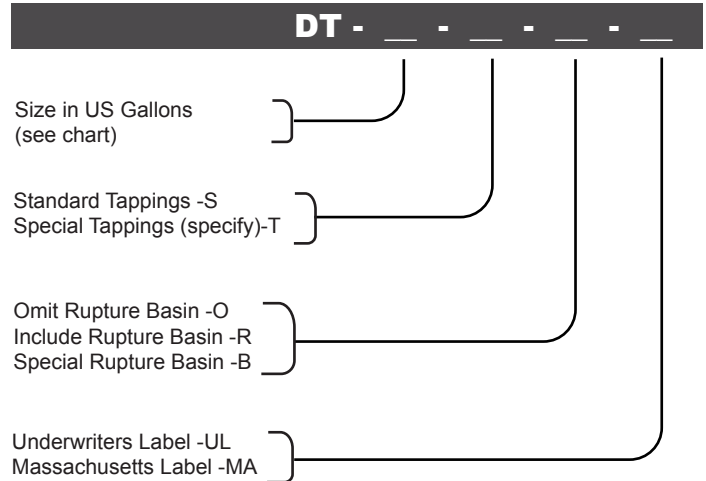
## Dimension Table

Catalog Number	Tank Dimensions				Vent	Companion Rupture Basin			
	DT/GAL.	A	B	C		WGT	STD	AA	BB
DT-020	13"	22"	21.5"	79	2"	18"	30"	17.5"	85
DT-030	13"	31"	21.5"	136	2"	18"	41"	17.5"	130
DT-040	13"	26"	33.5"	166	2"	18"	34"	29.5"	159
DT-060	13"	37"	33.5"	245	2"	18"	47"	29.5"	205
DT-080	24"	22"	45.5"	317	3"	29.5"	30"	41.5"	276
DT-100	24"	27"	45.5"	366	3"	29.5"	35"	41.5"	343
DT-130	24"	33"	45.5"	361	3"	29.5"	45"	41.5"	420
DT-160	24"	40"	45.5"	405	3"	29.5"	53"	41.5"	415
DT-190	24"	47"	45.5"	483	3"	29.5"	63"	41.5"	466
DT-220	24"	53"	45.5"	524	4"	29.5"	72"	41.5"	557
DT-260	24"	61"	45.5"	584	4"	29.5"	85"	41.5"	661
DT-275	24"	64"	45.5"	620	4"	29.5"	89"	41.5"	668
DT-290	24"	68"	45.5"	656	4"	29.5"	94"	41.5"	674
DT-360	45"	45"	45.5"	689	4"	50"	73"	41.5"	676
DT-460	45"	57"	45.5"	805	4"	51"	87"	41.5"	784
DT-560	45"	69"	45.5"	964	4"	57"	94"	41.5"	880
DT-620	45"	76"	45.5"	1041	4"	60"	99"	41.5"	932

Weights listed are approximate dry weights

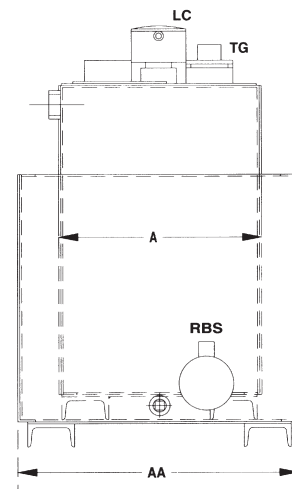
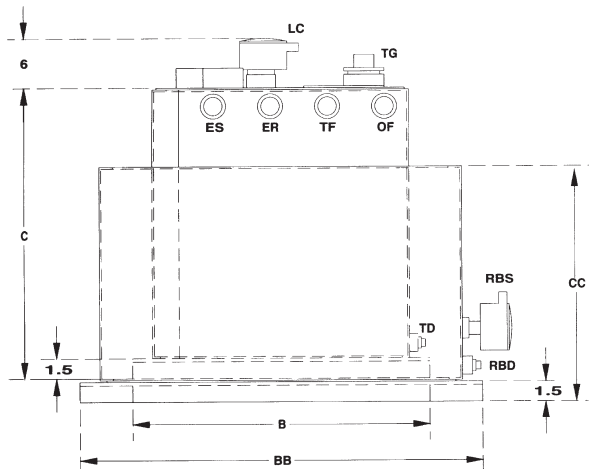
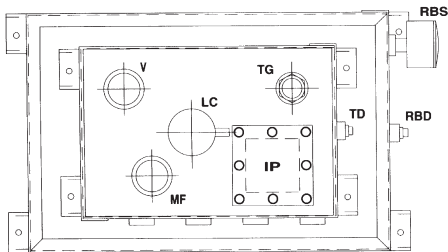
## Ordering Information

Specify the Day Tank Catalog Number as follows:



Optional Features	Catalog Number
NYC Certified	add "-NY" suffix
Other Specs.	add "-XX" suffix

Consult factory for other special requirements.



- ES Engine Supply 1"
- ER Engine Return 1"
- TF Tank Fill 1"
- OF Overflow 1"
- TD Tank Drain 1"
- RBD Rupture Basin Drain 1"
- MF Manual Fill Port 2" (capped)
- V Vent Tapping
- IP Inspection Port 6"x6"
- LC Level Controller Switch
- RBS Rupture Basin Leak Switch
- TG Tank Gauge